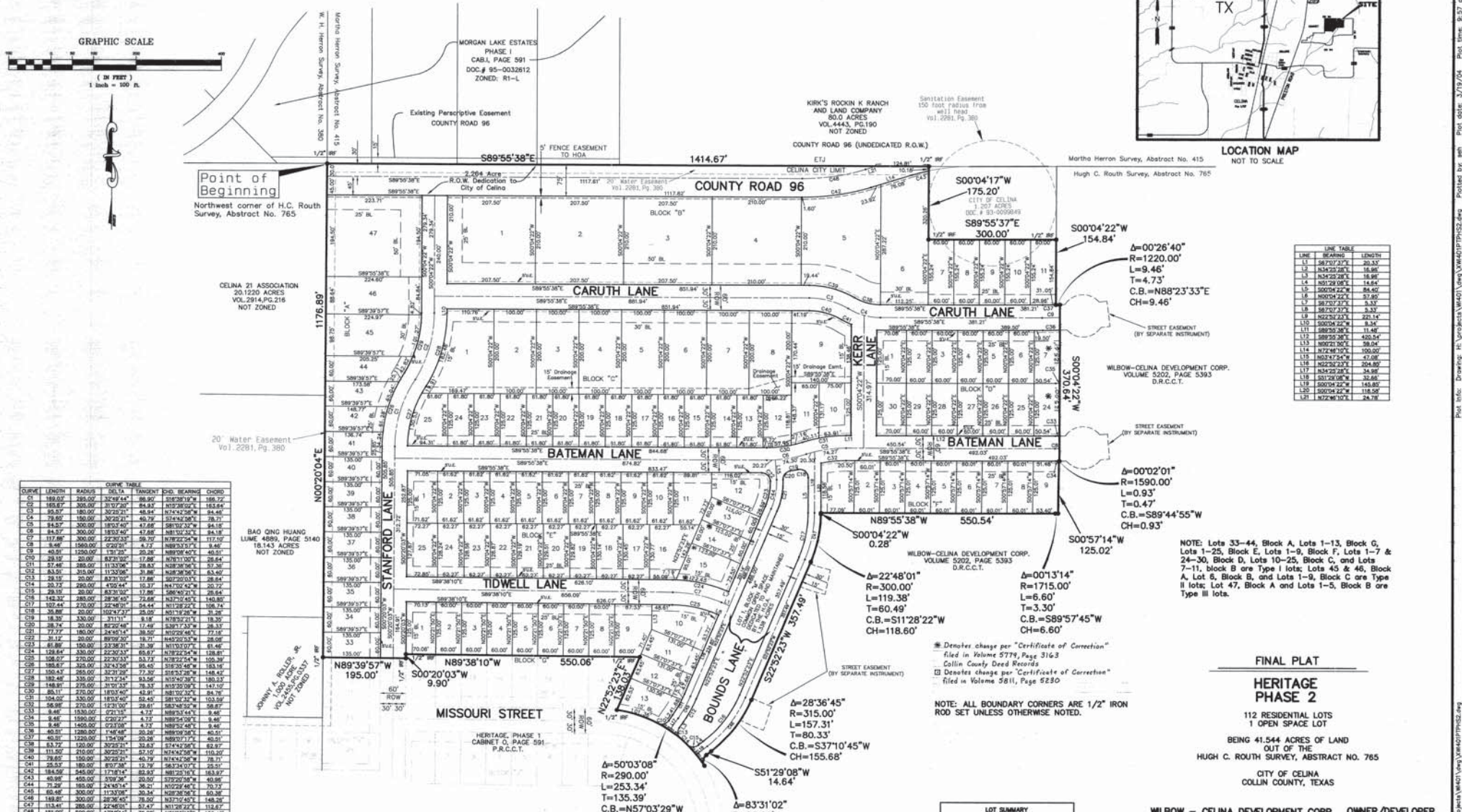
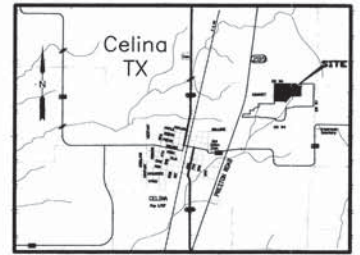


Listed for Record...
on May 20, 2004
Recording...
Receipt #...



CURVE TABLE

CURVE	LENGTH	RADIUS	DELTA	TANGENT	CHORD	BEARING	CHORD
C1	188.07	358.07	32°48'14"	86.90	312.57	N68°12'17"	188.72
C2	165.67	305.00	31°30'20"	84.92	302.50	N57°30'00"	163.64
C3	95.67	180.00	30°25'21"	48.94	174.24	N54°24'36"	94.46
C4	78.69	150.00	30°00'00"	49.74	157.48	N54°48'01"	78.71
C5	84.87	200.00	30°00'00"	42.68	189.32	N54°33'34"	84.18
C6	84.57	200.00	18°30'40"	42.68	188.11	N54°33'34"	84.18
C7	117.88	200.00	22°38'38"	59.73	217.92	N54°33'34"	117.14
C8	8.68	1500.00	0°00'00"	0.75	1499.41	N89°59'59"	8.68
C9	40.87	1250.00	1°33'20"	3.75	1248.87	N89°59'59"	40.87
CH0	28.10	20.00	87°33'00"	17.88	N76°10'00"	28.64	
C11	57.46	888.00	11°33'56"	76.82	N82°05'56"	57.58	
C12	83.91	814.00	11°33'00"	81.88	N82°05'56"	83.60	
C13	28.18	20.00	87°33'00"	17.88	N82°05'56"	28.64	
C14	30.74	880.00	4°50'44"	10.37	N84°50'42"	30.72	
C15	28.10	20.00	87°33'00"	17.88	N89°59'59"	28.64	
C16	148.32	880.00	28°36'40"	74.68	N73°24'40"	148.80	
C17	107.44	620.00	22°48'01"	54.44	N61°38'24"	108.74	
C18	36.84	20.00	87°33'00"	17.88	N81°12'32"	37.36	
C19	18.30	20.00	31°11'11"	8.18	N78°28'24"	18.39	
C20	36.84	20.00	87°33'00"	17.88	N81°12'32"	37.36	
C21	77.72	180.00	24°54'14"	38.52	N62°22'46"	77.18	
C22	31.72	20.00	89°59'59"	18.71	N89°59'59"	32.68	
C23	61.88	200.00	23°02'17"	36.39	N73°13'02"	61.46	
C24	128.64	200.00	22°32'37"	65.87	N72°32'34"	128.81	
C25	158.07	270.00	20°38'01"	53.72	N67°52'46"	159.38	
C26	188.67	268.00	32°43'30"	85.45	S35°33'48"	188.16	
C27	159.62	258.00	32°38'02"	77.52	S35°33'48"	158.92	
C28	182.48	255.00	31°24'54"	53.59	S35°33'48"	180.62	
C29	148.81	275.00	31°02'45"	78.32	N33°30'00"	147.10	
C30	85.11	270.00	18°26'40"	49.51	N82°05'56"	84.78	
C31	104.02	230.00	18°30'40"	52.42	N81°30'32"	103.50	
C32	56.88	270.00	20°00'00"	36.81	N82°05'56"	58.77	
C33	8.46	1830.00	0°21'15"	4.72	N89°53'44"	8.46	
C34	8.46	1800.00	0°20'27"	4.72	N89°54'00"	8.46	
C35	8.46	1800.00	0°21'15"	4.72	N89°53'44"	8.46	
C36	80.51	1280.00	1°46'58"	20.28	N89°59'59"	80.51	
C41	71.28	180.00	24°36'41"	36.72	N62°22'46"	70.73	
C42	83.72	180.00	30°25'21"	39.62	S74°42'36"	82.87	
C43	111.50	180.00	30°25'21"	39.62	N54°24'36"	110.73	
C44	29.82	150.00	30°25'21"	40.79	N54°24'36"	28.71	
C45	28.52	180.00	30°25'21"	39.62	S74°42'36"	28.01	
C46	71.28	180.00	24°36'41"	36.72	N62°22'46"	70.73	
C47	80.48	180.00	11°33'56"	30.44	N82°05'56"	80.38	
C48	188.81	200.00	22°38'02"	59.73	N73°13'02"	188.98	
C49	113.41	200.00	22°38'02"	59.73	N73°13'02"	114.27	
C50	181.00	200.00	17°28'14"	78.08	N81°38'18"	180.43	

LINE TABLE

LINE	BEARING	LENGTH
11	S89°55'37"E	20.52
12	N34°25'28"E	16.88
13	N34°25'28"E	16.88
14	S00°29'08"E	14.64
15	S00°24'22"E	84.62
16	S00°24'22"E	57.80
17	S00°24'22"E	37.94
18	S89°55'37"E	3.32
19	N42°24'22"E	221.14
20	S00°24'22"E	3.04
21	S89°55'37"E	11.48
22	S00°24'22"E	420.54
23	N00°21'00"E	58.04
24	N17°44'30"E	100.00
25	S00°24'22"E	47.08
26	N42°24'22"E	204.80
27	N17°44'30"E	34.88
28	S00°24'22"E	148.80
29	S00°24'22"E	118.08
30	N17°44'30"E	24.78

* Denotes change per "Certificate of Correction" filed in Volume 5779, Page 3163
Collin County Deed Records
□ Denotes change per "Certificate of Correction" filed in Volume 5811, Page 8280

NOTE: ALL BOUNDARY CORNERS ARE 1/2" IRON ROD SET UNLESS OTHERWISE NOTED.

FINAL PLAT
HERITAGE PHASE 2
112 RESIDENTIAL LOTS
1 OPEN SPACE LOT
BEING 41.544 ACRES OF LAND
OUT OF THE
HUGH C. ROUTH SURVEY, ABSTRACT NO. 765
CITY OF CELINA
COLLIN COUNTY, TEXAS

LOT SUMMARY

TYPE	AREA	TYPICAL	PHASE 2
I	7,500 S.F.	60'X125'	94
II	20,000 S.F.	100'X200'	12
III	43,960 S.F.	210'X200'	8
TOTAL			112

WILBOW - CELINA DEVELOPMENT CORP. OWNER/DEVELOPER
8330 LBJ Freeway, Suite 745, Lockbox 88
Dallas, TX 75243 (972) 479-0697
JONES & BOYD, INC. SURVEYOR/ENGINEER
16850 Dallas Parkway, Suite 240
Dallas, Texas 75248 (972) 248-7878